



At-Home Resistance Training Mirror SPlan Series



XBURN TECHNOLOGY

About US

BEIJING XBURN TECHNOLOGY CO., Ltd.



PATENTS

Patents applied in China, the U.S. and Japan

20+



AWARD

Received various international awards

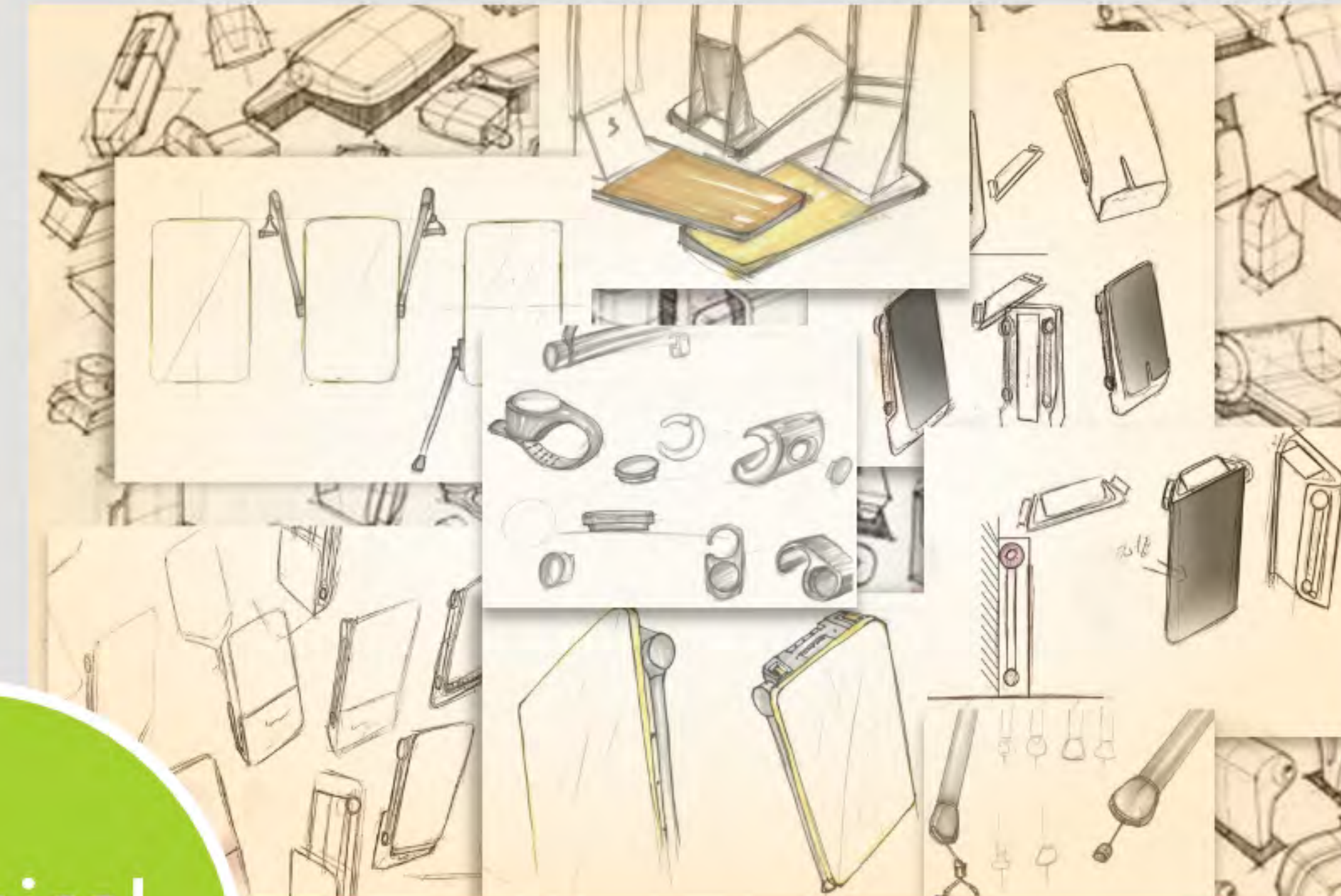


About US

BEIJING XBURN TECHNOLOGY CO., Ltd.

Motor

Cutting-edge motor design technology



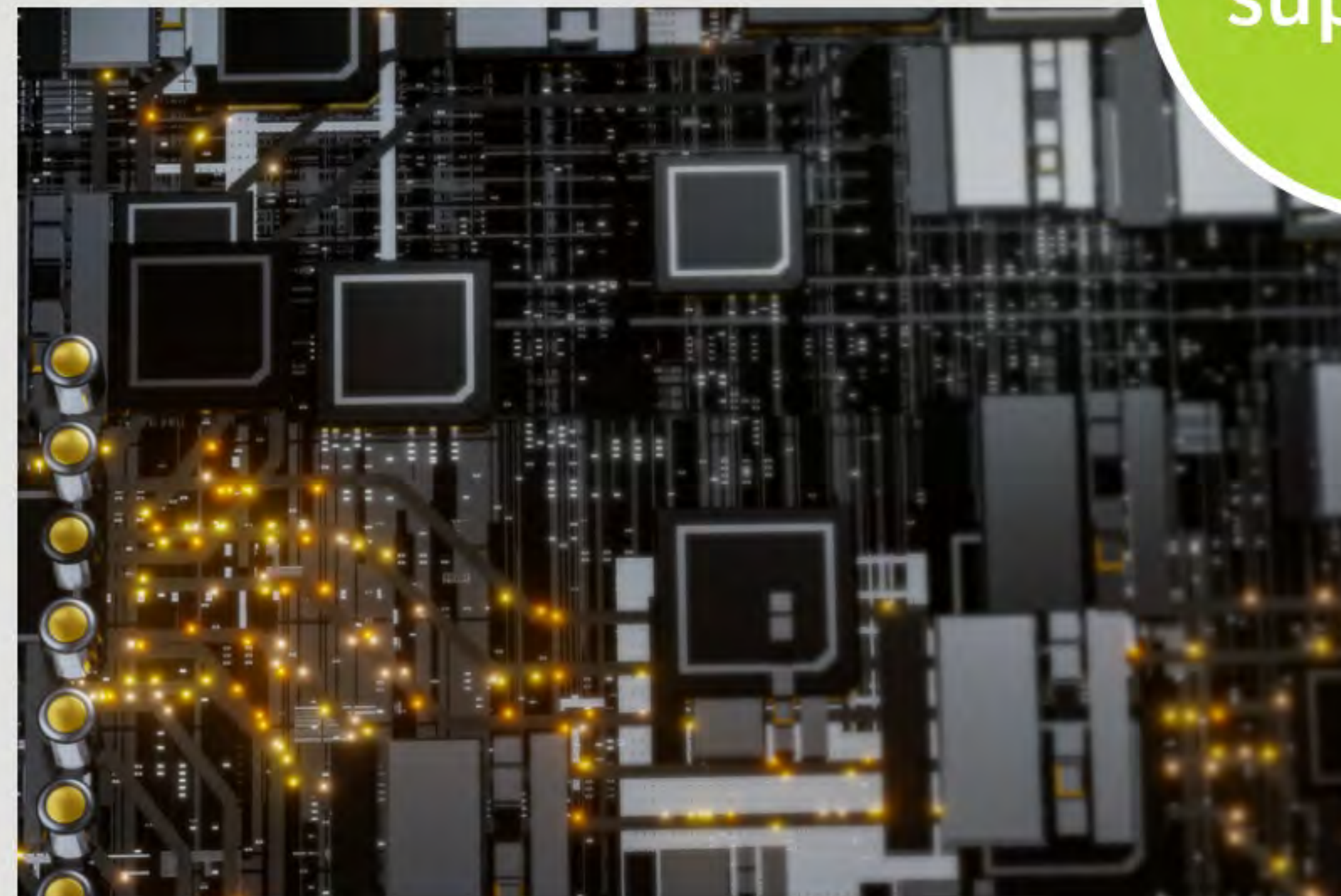
ID

Well-established industrial design management

Technical superiority

Electronic

Excellent electronic control management



GEM

GEM Internet enterprise gene





SPlan Model Y



SPlan Model Y is an intelligent integrated training device that uses innovative electronic counterweight technology and features a dual motor resistance apparatus, and adjustable swing arms for efficient full body strength training. Its design includes an ultra-thin and ultra-light body, HD mirror display, wall-mounted installation, and full-mirror intelligent control for an immersive fitness experience.

A home gym



This design combines home and industrial styles by using a trapezoidal shape and stainless steel rails to hide the swing arms. When the arms are folded in, it becomes a mirror that fits in with home decor. When the industrial-style arms are used, they resemble gym equipment.

Digital weight

This device uses electronic counterweight technology to provide multiple training modes in a small space for strength training at home. With training planning and data tracking, it makes stay-at-home fitness easier with intelligent technology.

Weight range

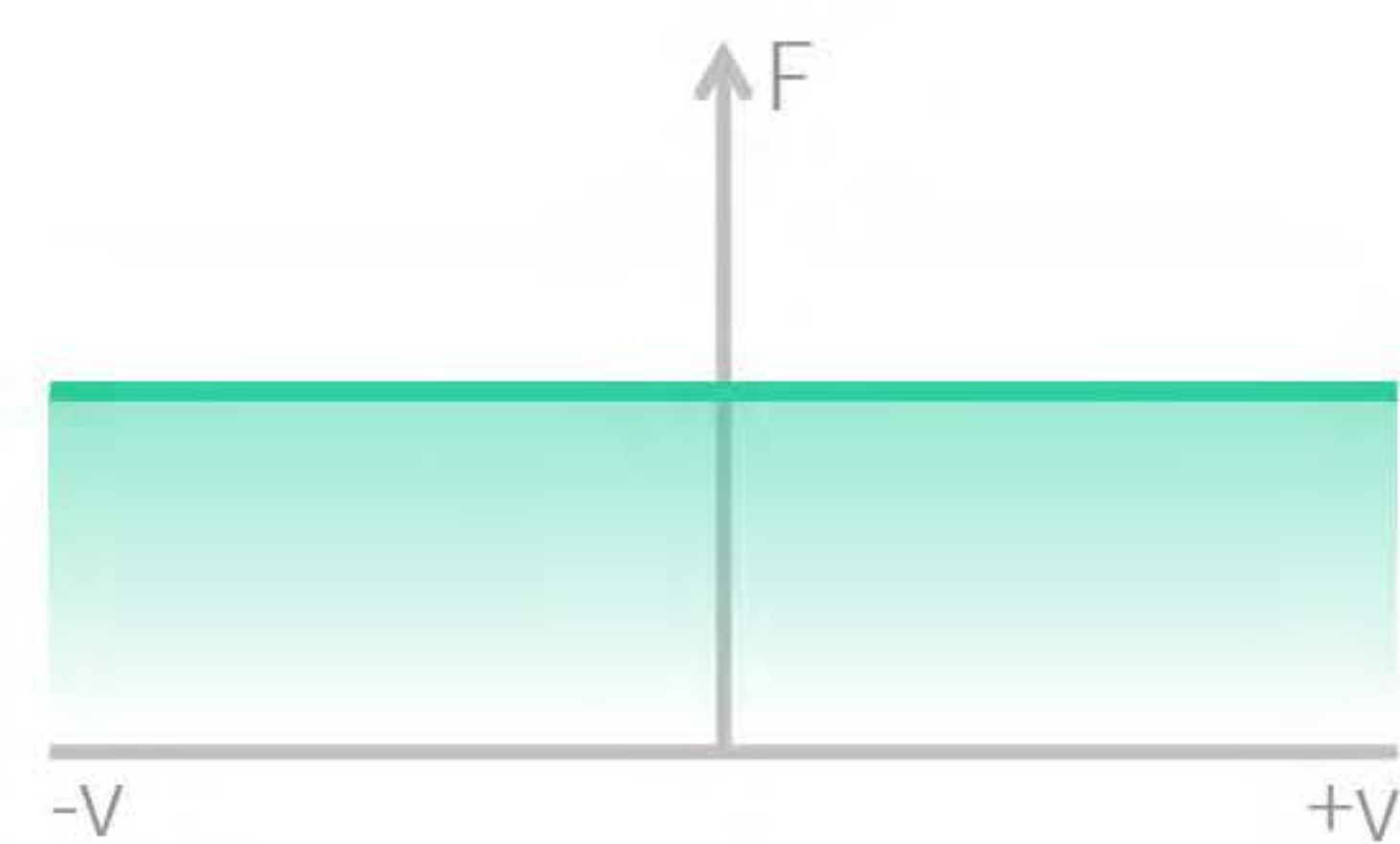
0-100KG

Accuracy

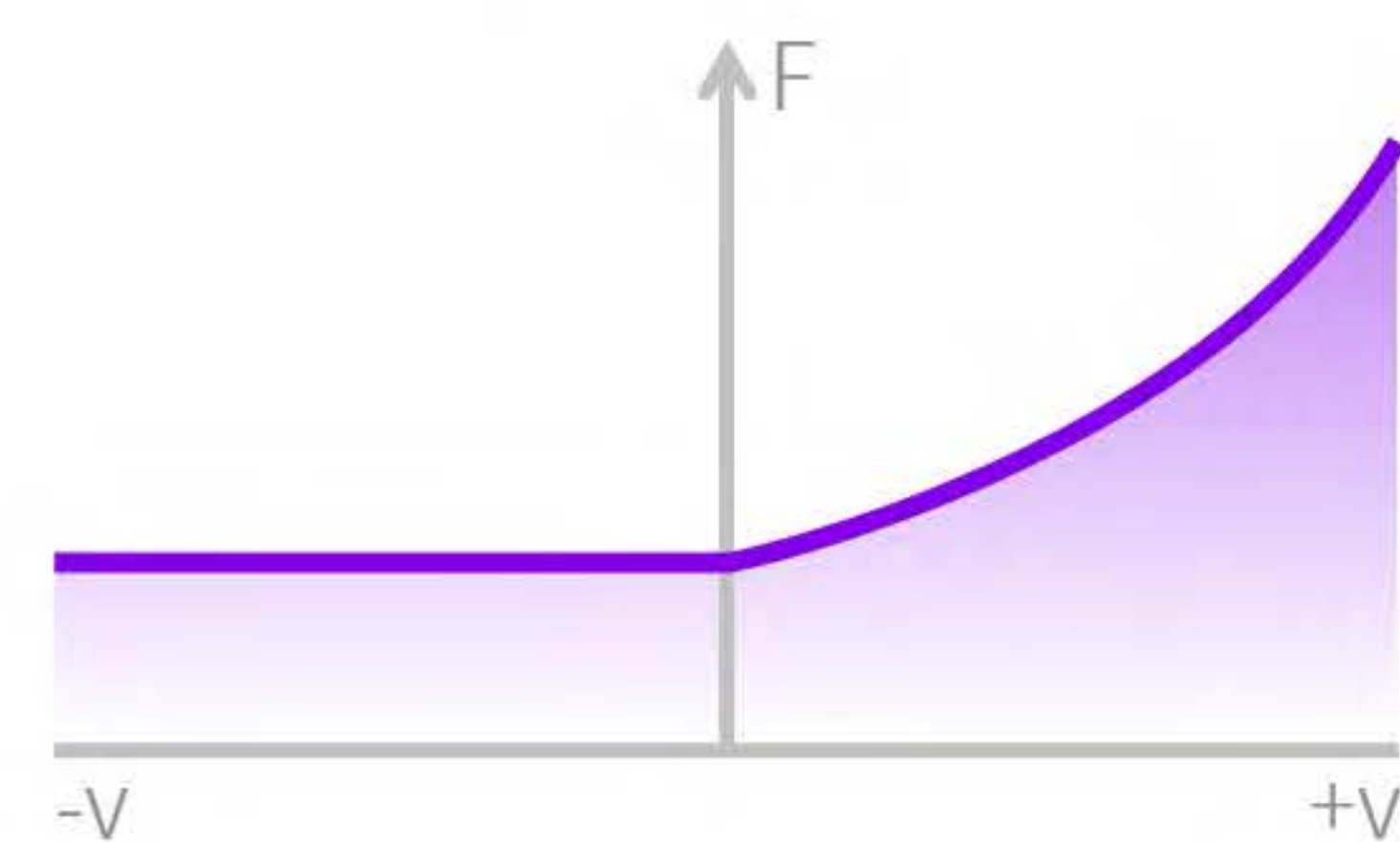
0.1KG



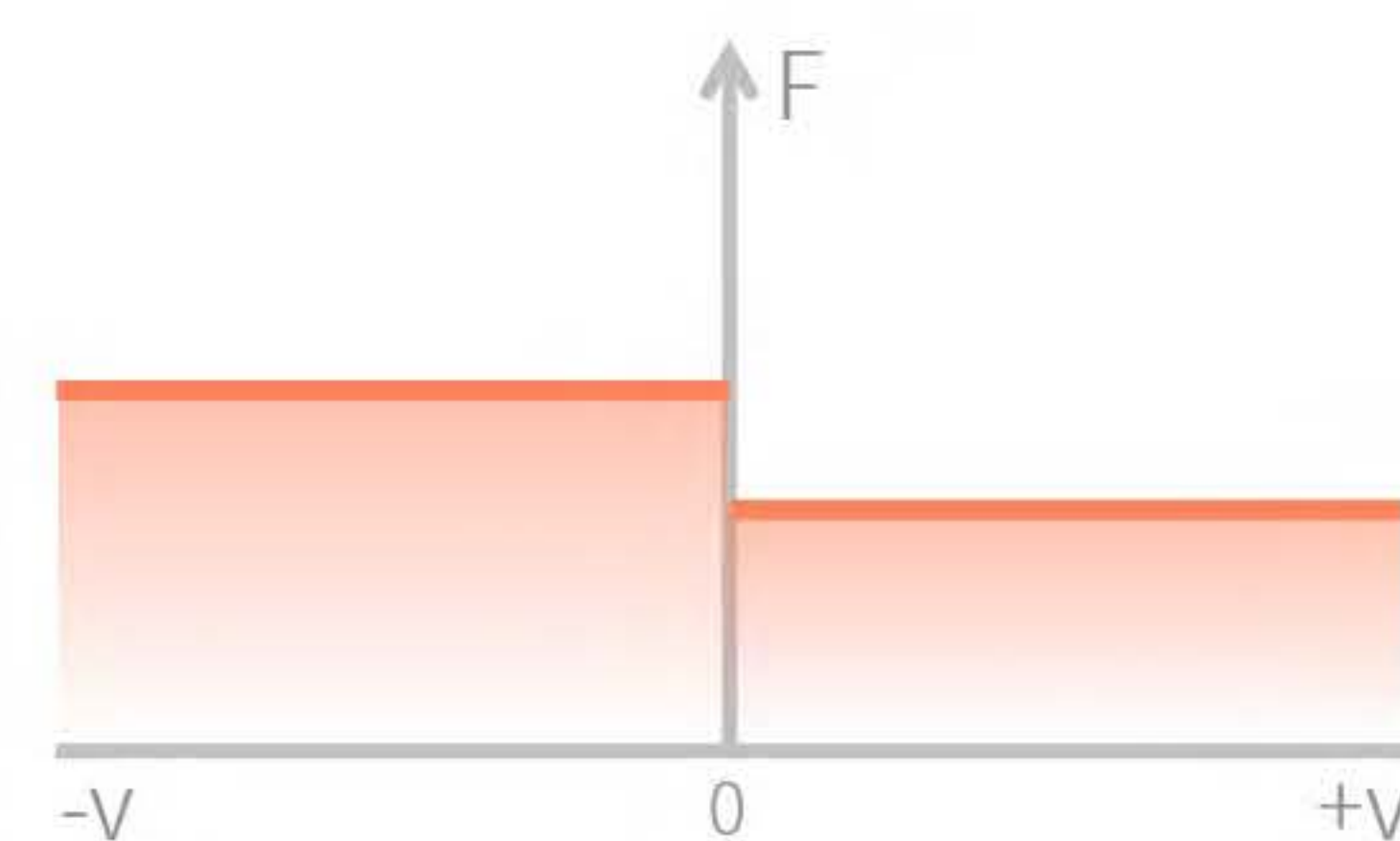
Standard Mode



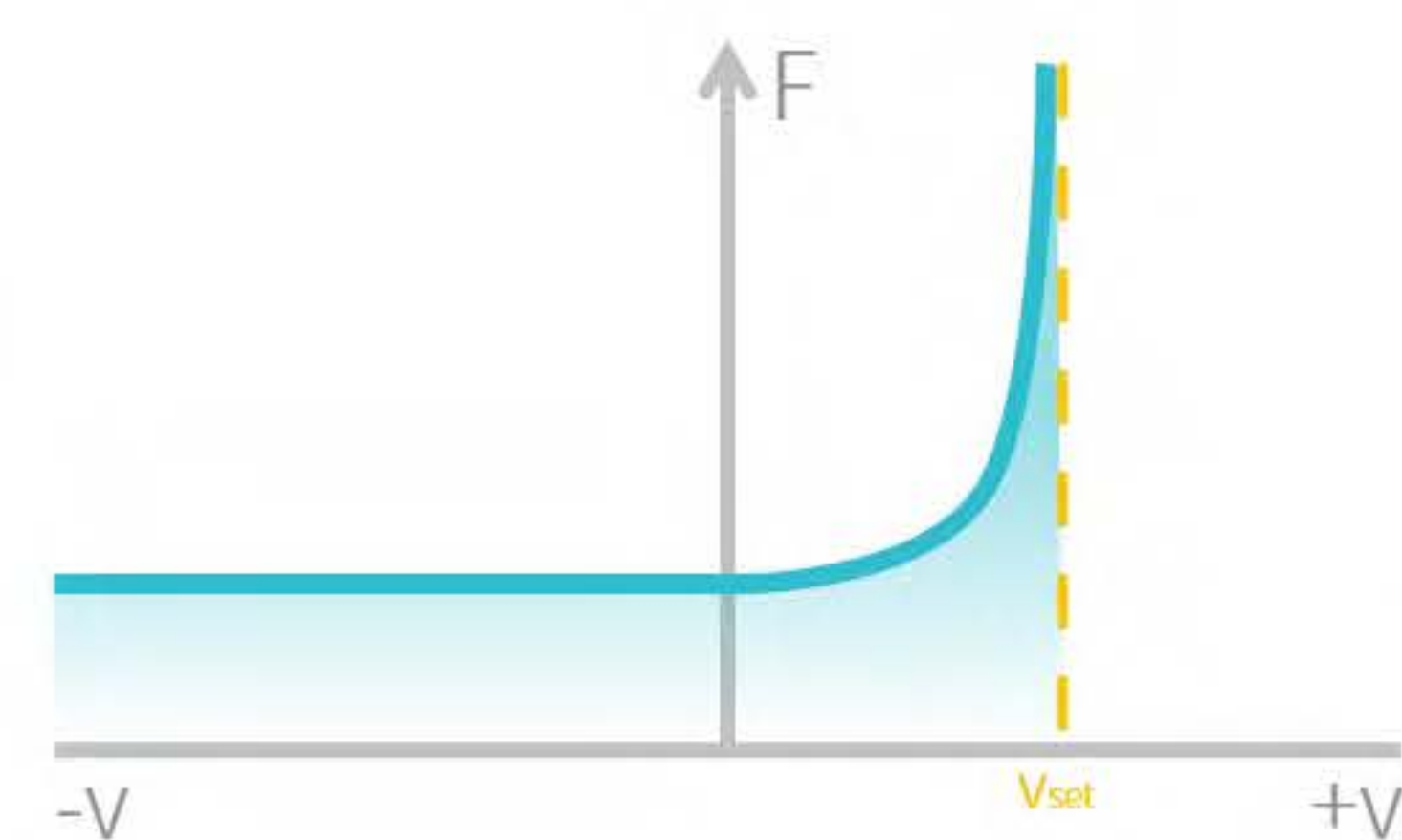
Fluid Mode



Eccentric Mode



Isokinetic Mode



Smart fitness, meets fitness needs
in multiple dimensions.





2~50KG



2~50KG



About motor

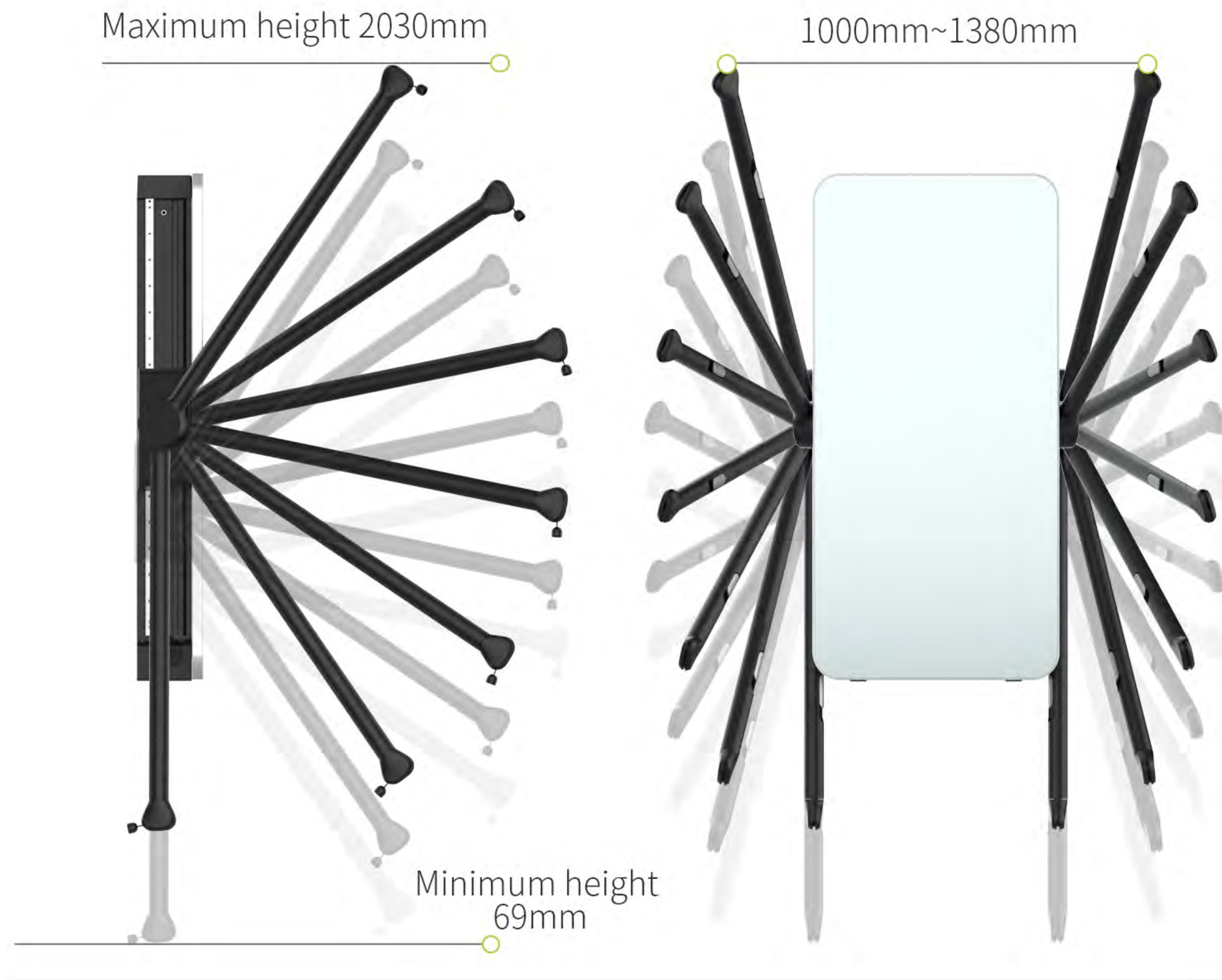
Axial three-phase permanent-magnet brush-less direct-drive dual motor. The device enables bilateral synchronization and even engaging. With lower rotational inertia and reciprocating resistance but better smoothness, its force approximates natural gravity.



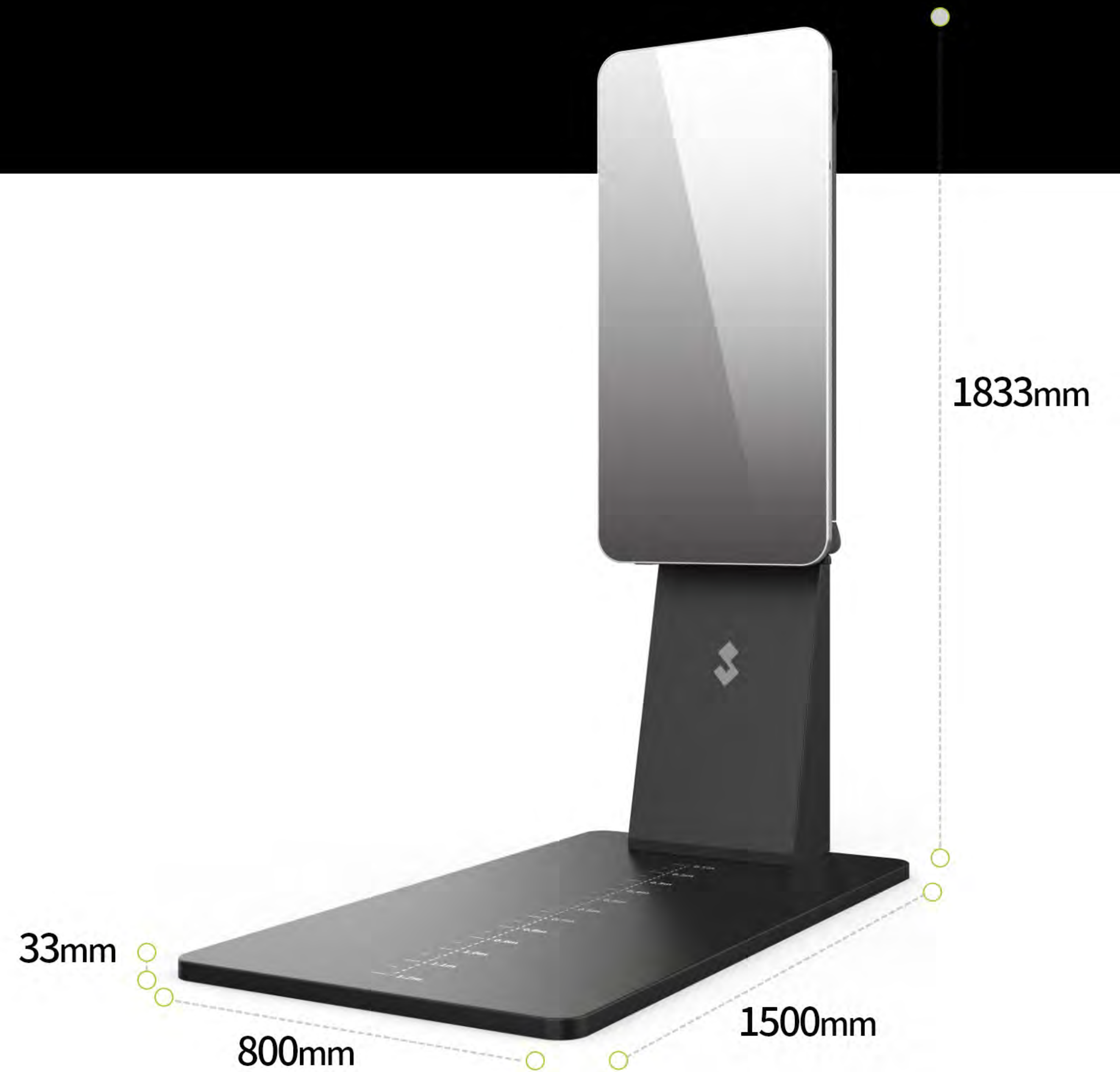
The **250mm diameter** pancake motor provides greater torque, better handling, and quiet operation without the noise and meshing feeling of a reducer.



Adaptability



From high to low, comprehensive coverage of movements.



Support floor stand



Specification

Dimensions	1150*500*150mm
Weight	75KG
Arm adjustment	5 adjustable height levels 7 adjustable angle levels
Outgoing Rope length	From 0.1 to 2 meters
Storage status	Hidden arm when not in use
Display screen	23.8 HD Display
Interactivity	Touch interaction
Mainboard	6-core CPU with a maximum clock speed of 2GHz
Wireless	<input checked="" type="checkbox"/> wifi <input checked="" type="checkbox"/> Bluetooth
Motor	Dual permanent magnet synchronous motor (PMSM)
Power	Maximum Power of 1200 W
Power supply	Standby Power Consumption of 15W 110V-220V power input
Resistance range	Resistance range on one side is 2-100kg range on both sides is 4-100kg
Mounting	on the wall / on the stand



Certification

International quality test certification



EU CE certification



US FCC certification



EU rohs standard



Japan TELET certification



US UL certification



Japan PSE certification





SPlan Model S



Smart&Safe

- 3 Training Aids
- 5 Protections for Safe Training



This is an intelligent training device for home use that utilizes innovative electronic counterweight technology. It combines powerful servo motors, intelligent systems, tempered glass full-length mirrors to provide users with a safer and more effective systematic body management plan that is easy to adhere to for a long time



Perfect Design

- 4 Engagement Points, Suitable for Users 1.6~2m
- Full-Mirror Training Feedback

Excellent Technology

- 32' HD Touch Panel
- High-Strength Safety Tempered Glass





Digital Power

- 1.5~100Kg
- 0.1KgHigh Precision



Specification

Dimensions	707mm*1895mm*168mm
Weight	94KG
Arm adjustment	4 force positions 21 adjustable height levels
Outgoing Rope length	Upper force position: from 0 to 2m Lower force position: from 0 to 3m
Storage status	
Display screen	32-inch 4K display
Interactivity	Touch interaction
Mainboard	6-core CPU with a maximum clock speed of 2GHz
Wireless	<input checked="" type="checkbox"/> wifi <input checked="" type="checkbox"/> Bluetooth
Motor	High-performance permanent magnet synchronous motor
Power	Maximum Power of 1000 W Standby Power Consumption of 15W
Power supply	110V-220V power input
Resistance range	Resistance range 2-100kg
Mounting	on the wall / on the stand



XBURN TECHNOLOGY



Business Contact in Israel

Zack nahum

☎ 052-3298098

✉ Zack@lesmills.co.il

🌐 www.justfit.co.il

Official website

